

## TROPATH SPECIFICATIONS

### Product Information

Weight	36 kgs (Base 20 kgs, Lid - 16kgs)
External Dimensions TroPath	H 210mm, L 1000mm, W 700mm
Internal Dimensions TroPath	H 180mm, L 1000mm, W 688mm
Material	Recycled polymers
Fire Retardant Characteristics	Complies with Network Rail specification
Manufacturing Process	Injection Moulding for guaranteed quality
Bend/Tilt Characteristics	Designed into the product for ease of install

### Product Benefits

Lightweight	Higher installation rates/Lower installation costs
Easy to handle	Reduced RRV requirement
Strength	Tested to withstand site traffic with lid reinforced with Durbar plate
Security	Anti-Vandal/Anti-Theft features
Quality	ISO 9001 injection moulding process
Environmentally Friendly	Recycled polymer material /OH Out Recovery Scheme
Product Interface	Transitions, bends and T's are available in standard industry dimensions and bespoke fabrication where required

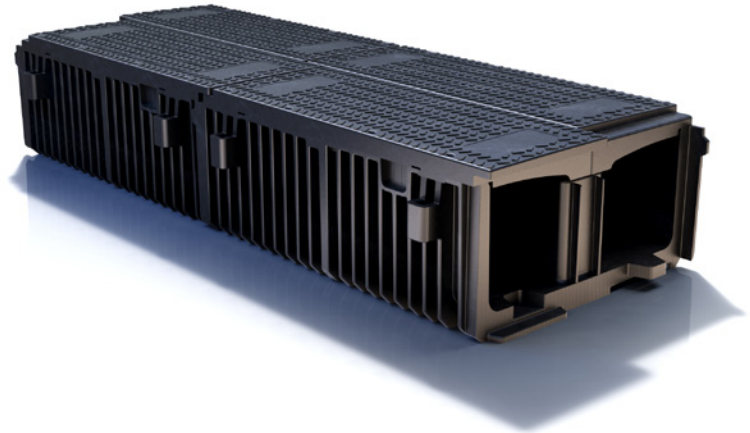
### Transportation Comparison

Expect to see significant volumes per 40' truck.
--

### Health & Safety Comparison

	TroTred	Concrete Trough
Lifting	Within Network Rail manual handling assessment criteria (MAC)	Two Men Lift
Cutting	Standard Tools	Petrol Disc Cutter
Dust/Noise	No	Yes
Finish	Smooth	Abrasive
Carbon Footprint	Light	High
Recyclable	Yes Off-cuts/End of life recycling options	No

WINNER OF THE NATIONAL  
RECYCLING AWARDS - BEST  
RECYCLED PRODUCT 2017



**CONTACT**  
**Bev McBride**  
 TroTrack Composites  
 Tel: +44 1302 888666  
 PO Box 139, Sandall Lane,  
 Kirk Sandall Industrial Estate,  
 Doncaster DN3 1WZ.

Orders can be made directly  
with the Trojan team.