

## TROTROF C1/43 SPECIFICATIONS

### Product Information

Weight	25 kgs (Base - 14kgs, Lid - 9kgs)
External Dimensions C1/43 TroTrot	H 413mm, L 1034mm, W 440mm
Internal Dimensions C1/43 TroTrot	H 285mm, L 1034mm, W 352mm
Material	Recycled Polymers
Fire Retardant Characteristics	Complies with Network Rail specification
Manufacturing Process	Injection Moulding for guaranteed quality
Bend/Tilt Characteristics	Designed into the product for ease of install

### Product Benefits

Lightweight	Higher installation rates/Lower installation costs
One Man Lift	Reduced site & RRV handling
Strength	Tested to 1 tonnes
Security	Anti-Vandal/Anti-Theft features
Quality	ISO 9001 injection moulding process
Environmentally Friendly	Recycled polymer material / Off Cut Recovery Scheme
Product Interface	Transitions, bends and T's are available in standard industry dimensions and bespoke fabrication where required

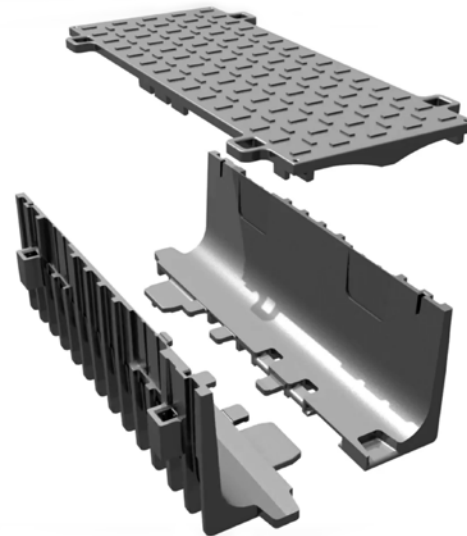
### Transportation Comparison

	TroTrot C1/43	Concrete Trough
Units/Pallet	24 lids/pallet (180kgs) 12 bases/pallet (288kgs)	42 lids/pallet 24 bases/pallet
Transport for 192 Units	1 Truck	n/a
Transport for 10000 Units	52 Trucks	n/a

### Health & Safety Comparison

	TroTrot C1/43	Concrete Trough
Total Weight	25 kgs scores green in the MAC Assessment Tool/8 Man Lift	Two Men Lift
Cutting	Standard Tools	Petrol Disc Cutter
Dust/Noise	No	Yes
Finish	Smooth	Abrasive
Carbon Footprint	Medium	High
Recyclable	Yes	No

## PART OF AN AWARD WINNING CABLE PROTECTION SYSTEM



### CONTACT

**Bev McBride**  
TroTrack Composites  
Tel: +44 1302 888666  
PO Box 139, Sandall Lane,  
Kirk Sandall Industrial Estate,  
Doncaster DN3 1WZ.

Network Rail Specific Information  
Product Acceptance Number: PAD5/04578  
RISQS Supplier No: 094155  
Orders can be made using the PADS below  
directly with the Trojan team:  
Combined 057/073724